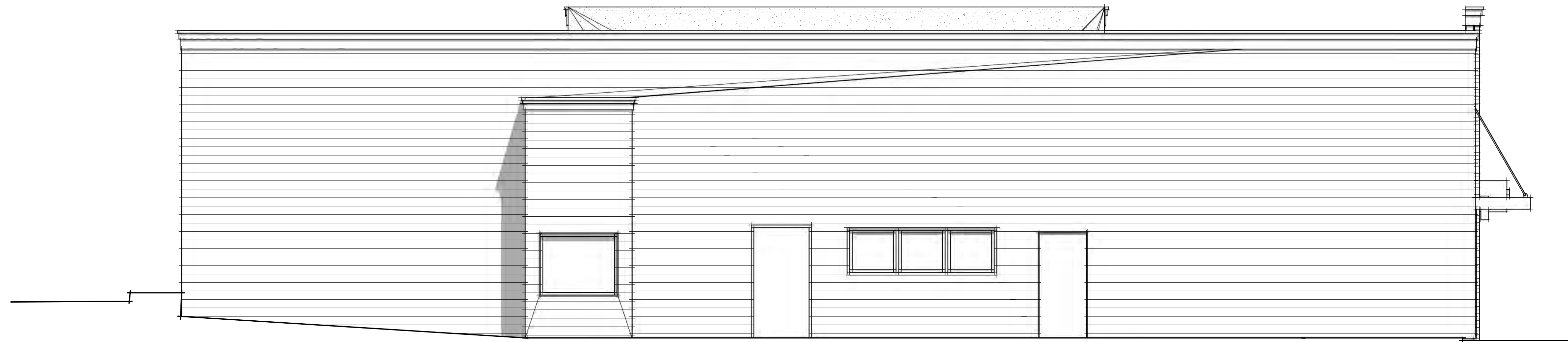


2 RIGHT SIDE ELEVATION
Scale: 1/4" = 1'-0"

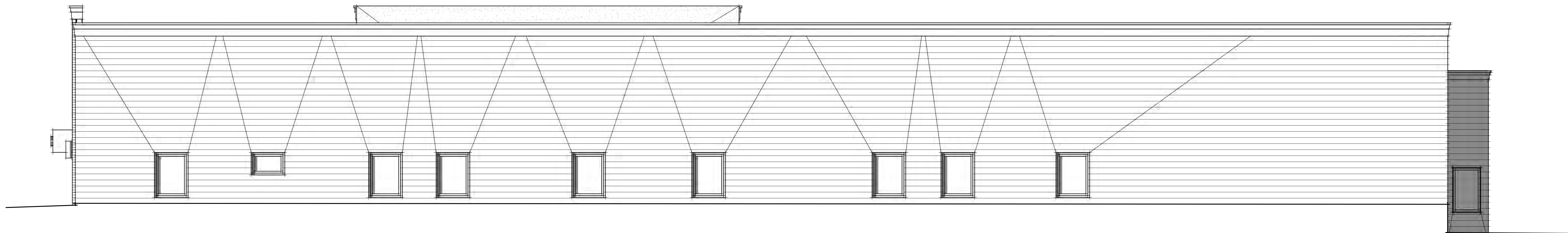


1 SOUTH ELEVATION
Scale: 1/4" = 1'-0"



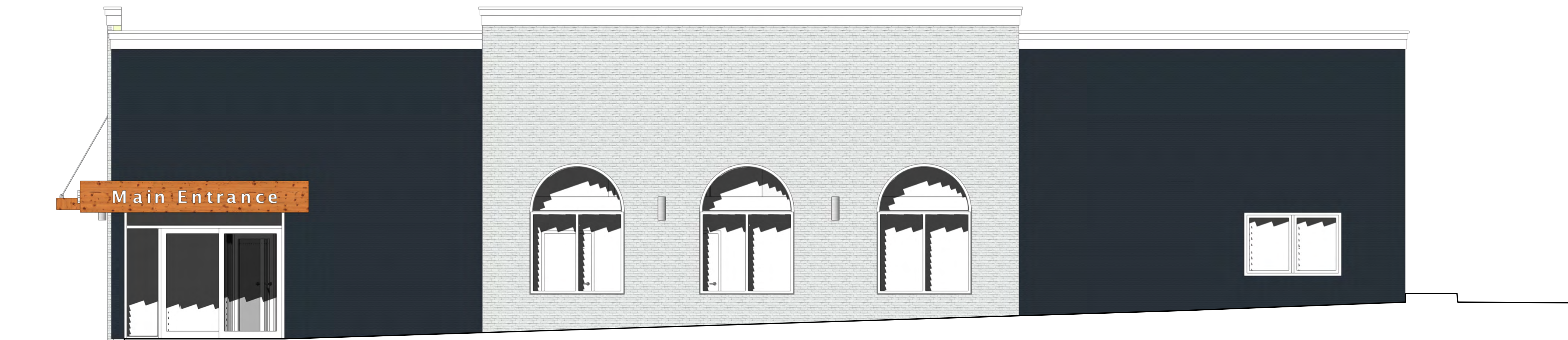


4 LEFT SIDE ELEVATION
Scale: 1/4" = 1'-0"



3 REAR ELEVATION
Scale: 1/4" = 1'-0"





4 RIGHT SIDE ELEVATION
Scale: 1/4" = 1'-0"



3 SOUTH ELEVATION
Scale: 1/4" = 1'-0"

